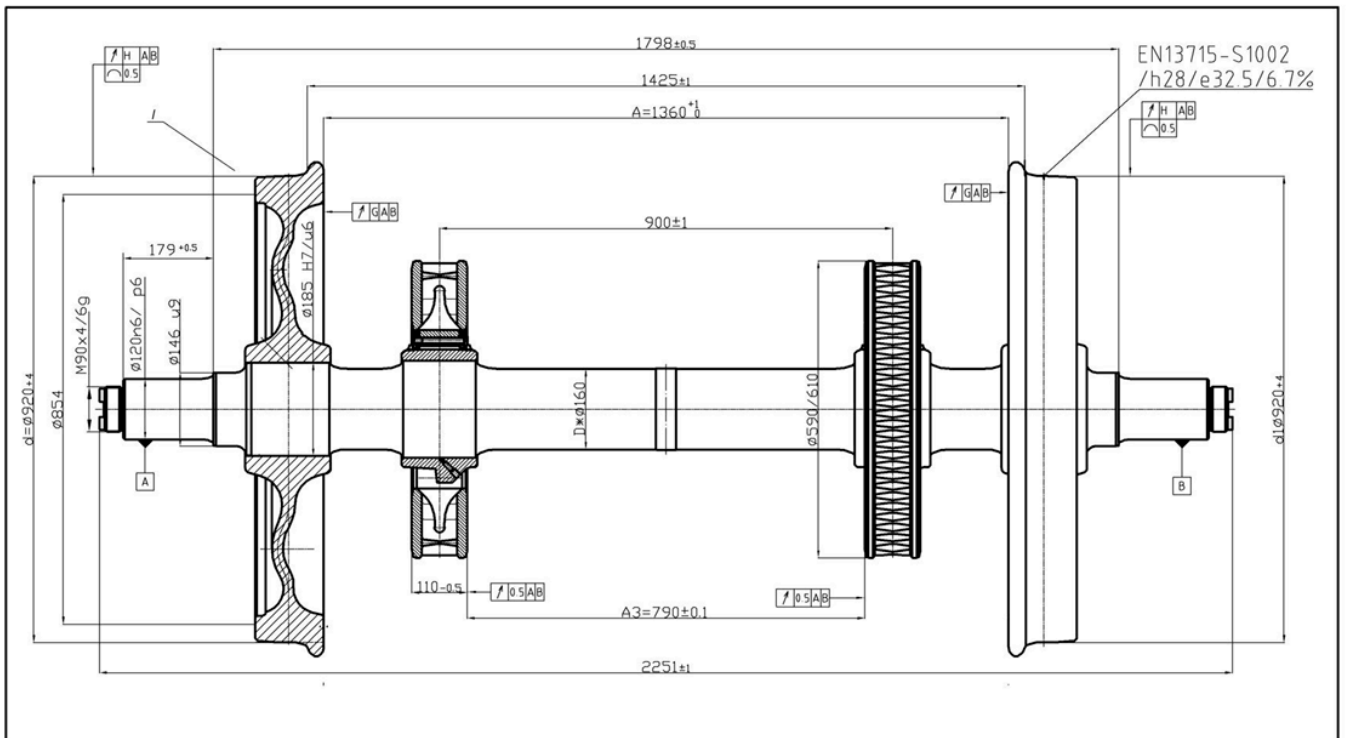




# WHEELSET FOR INTERCITY PASSENGER COACHES TYPE BA 092



Higher exploitation security due to the high resistance to pressure actions and low deformation of the wheels in the presence of pressure actions.

Weight of the wheelset: 1394kg.

## MAIN PARAMETERS OF THE AXLE:

Diameters of the axle for assembly: Ø120x179 mm by EN 13261

Nominal weight: 374kg.

Material: A1N EN13261 2003

## MAIN PARAMETERS OF THE WHEEL:

Diameter of the rolling ring: Ø920mm

Minimal repair diameter: Ø854mm

Nominal weight: 304kg.

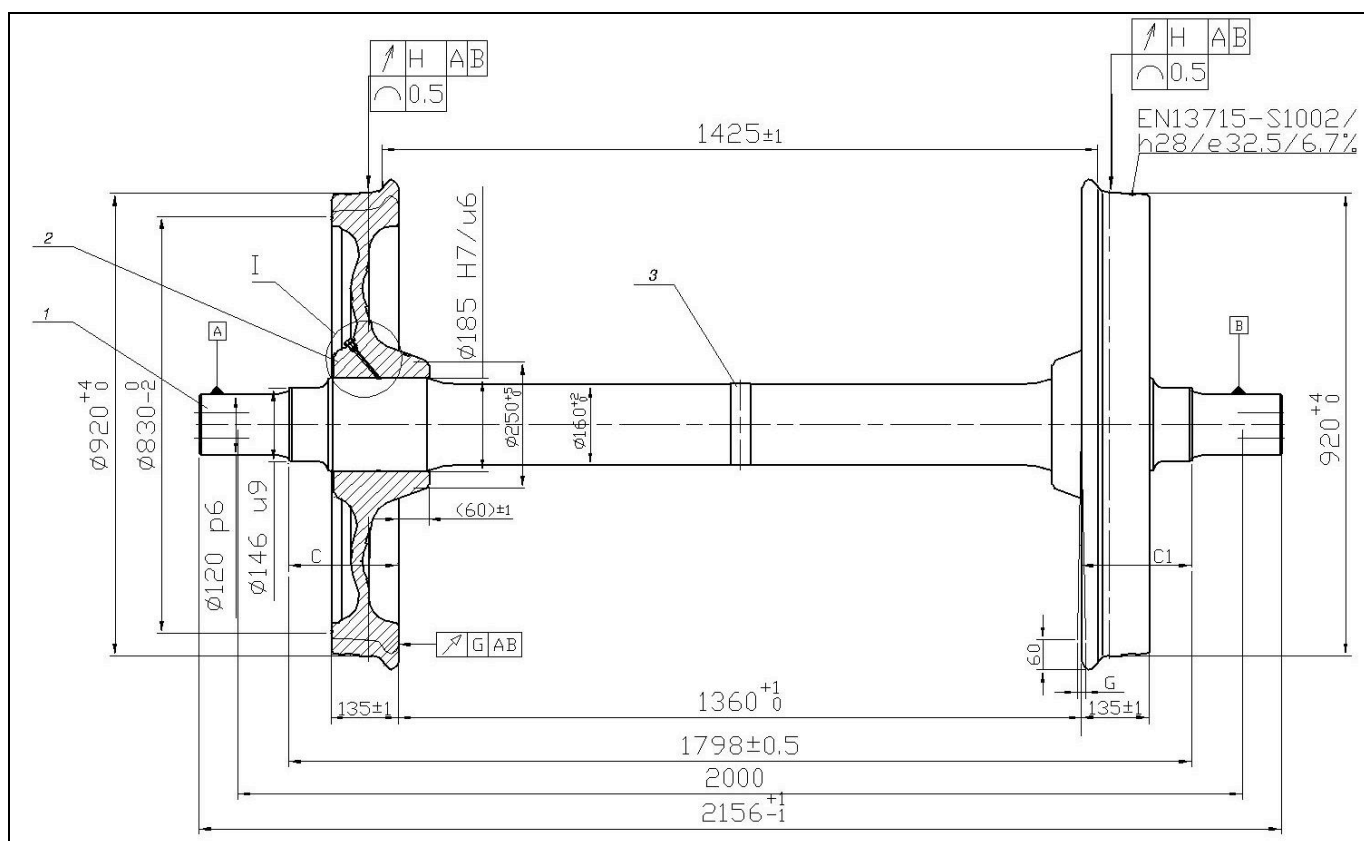
Material: ER7 EN 13262

The design of the wheelset and the wheels originates from the needs of the clients for usage of sleeping and passenger wagons with speed of motion of 200km/h. The manufacture and control of the wheelset is performed according to the requirements of BN 918274 and EN 1326





# WHEELSET Ø920mm for 20 ton axle load



Designed for exploitation on passenger and freight wagons. The construction has proven its high reliability during its long lasting exploitation and long period between repairs.

Weight of the wheelset 1100kg.

## MAIN PARAMETERS OF THE WHEEL:

Diameters of the axle for assembly of bearings: Ø120x179 mm according to EN 13261

Grease for assembly – Li2

Nominal weight: 339kg.

Material: EA1N EN13261

## MAIN PARAMETERS OF THE WHEEL:

Asymmetric with diameter of the rolling ring: Ø920mm

Minimal repair diameter: Ø840mm

Nominal weight: 381kg.

Material: ER7 EN13262

The design of the wheelset and the wheels originates from the needs of the clients for usage of freight wagons with speed of motion 120 km/h. The manufacture, control and repair of the wheelset is performed according to its purpose and the requirements of BN 918274, EN 13260, 984.0400 and VPI04.

